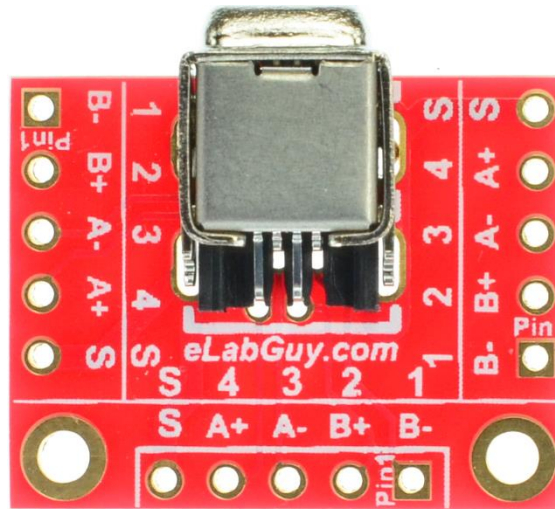


# 1394-4F-BO-V1A

## 1. Description:

1394-4F-BO-V1A is a simple 4pin FireWire 400 Female socket breakout board. It brings all 4 pins of a 4-conductor 1394 FireWire 400 Female connector to screw terminal blocks and headers for easy testing, prototyping and breadboard connection. For breadboard connections, user can use the 5pin header on the bottom for a sideways connection. User can also use the two 5pin headers on both sides of the breakout board to connect to the front end of the breadboard for a steady connection.



## 2. Features:

- All 5 pins (including Shield) of a 4-conductor FireWire 400 1394 Female socket brought out to headers and screw terminal blocks
- Various connecting method chosen by users.
- 0.9"(22.86mm)X0.7"(17.78mm) board dimensions

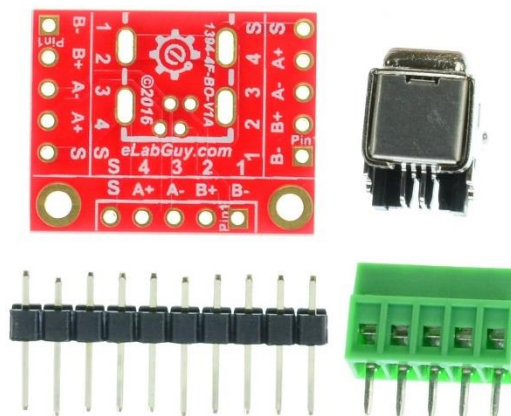


Figure 1: Parts inside the kit

(Note: the module is not assembled, user can decide which connector to use on the module.)

## 3. Parts:

- 1) 1pc X 1394-4F-BO-V1A PCB
- 2) 1pc X FireWire 400 4pin Female socket
- 3) 1pc X 5pin 0.1"(2.54mm) spacing terminal block
- 4) 1pc X 10pin 0.1"(2.54mm) header

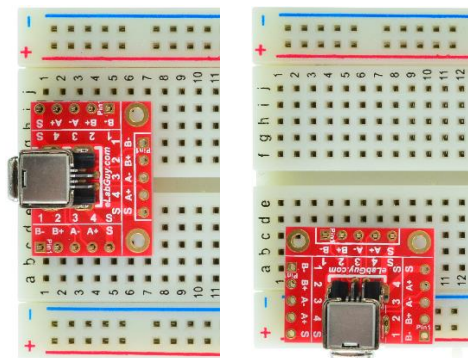


Figure 2: Example of connecting the 1394-4F-BO-V1A on a breadboard

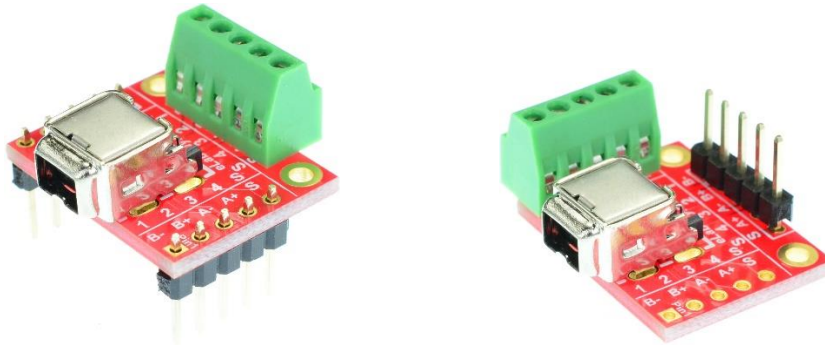


Figure 3: 1394-4F-BO-V1A Various connections

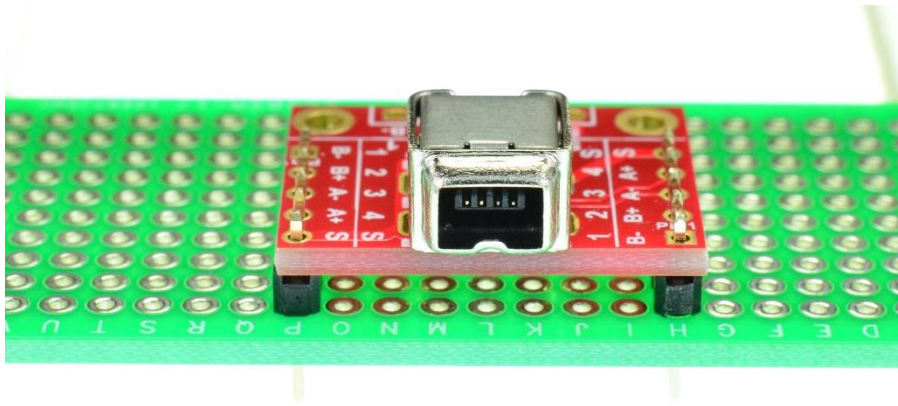


Figure 5: Solid Mounting on prototype PCB

## Related products from eLabGuy:



1394-6F-BO-V1A



1394-9F-BO-V1A